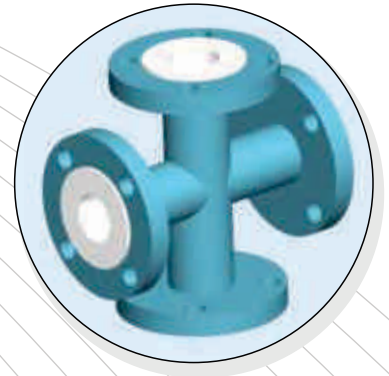
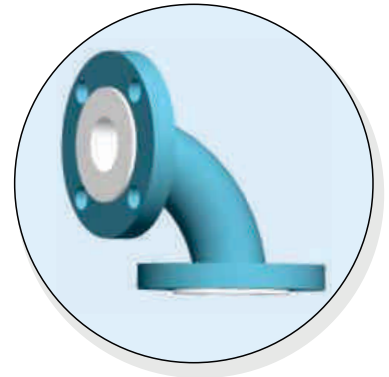
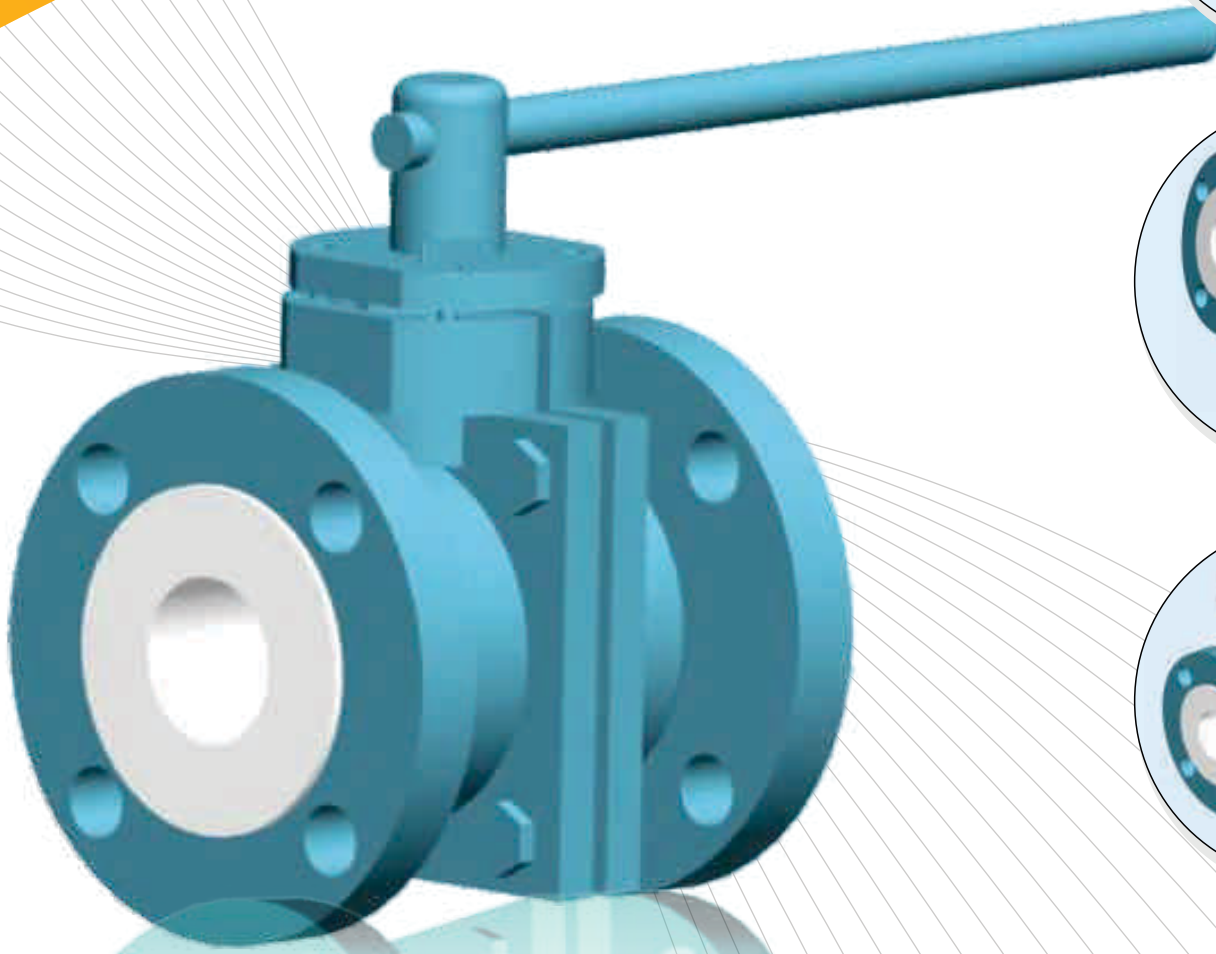
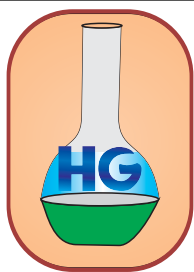


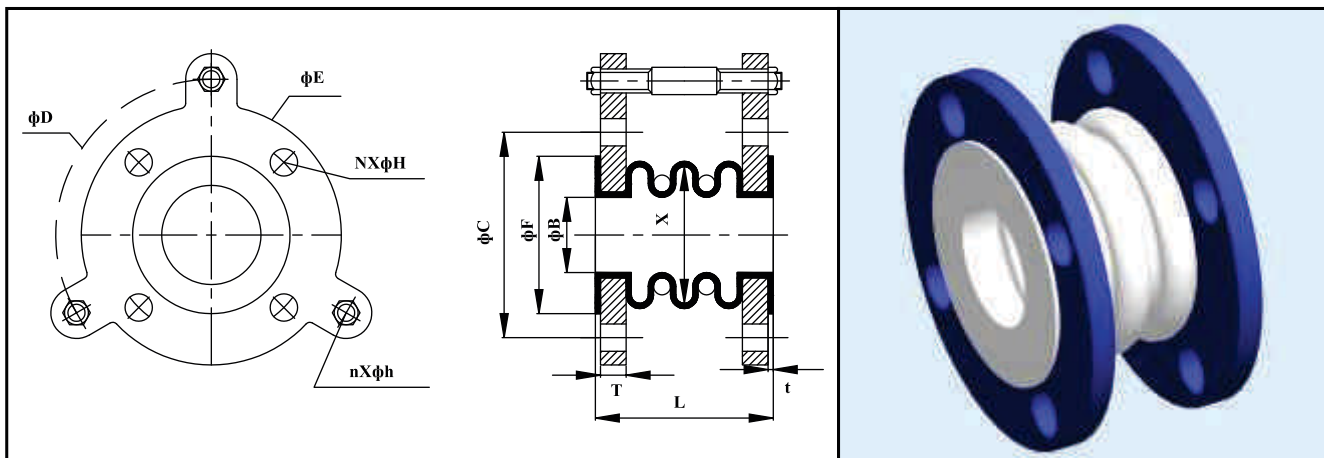
Heta Glass Industries



**ULTIMATE SOLUTION FOR
FLUID TRANSMISSION WORLD...**



PTFE HIGH PRESSURE BELLOW



Nominal Size	ϕB	X	C	ϕD	ϕE	ϕF	L	T	t	N x ϕH	n x ϕh
(mm)	(mm)	(mm)	(mm)	(mm)	(mm)	(mm)	(mm)	(mm)	(mm)	(mm)	(mm)
15	21	31	60.3	111	88.9	35	50	10	2	4 x 14	3 x 10
25	33	50	79.4	129	108.0	51	50	10	2	4 x 14	3 x 10
40	48	69	98.4	148	127.0	73	55	10	2	4 x 14	3 x 10
50	58	84	120.6	180	152.4	92	70	12	3	4 x 18	3 x 12
65	73	103	139.7	205	177.8	105	80	12	3	4 x 18	3 x 12
80	90	116	152.4	218	190.5	127	100	12	4	4 x 18	3 x 12
100	110	154	190.5	256	228.6	157	100	14	4	8 x 19	3 x 12
150	160	197	241.3	313	279.4	216	100	16	4	8 x 22	3 x 14
200	210	240	298.4	376	342.9	270	150	16	4	8 x 22	3 x 14
250	262	310	361.9	445	406.4	324	150	20	5	12 x 25	3 x 14
300	310	380	431.8	521	482.6	381	150	20	5	12 x 25	3 x 14
450	462	524	577.8	680	635.0	533	150	25	5	16 x 32	3 x 19
500	512	581	635.0	743	698.5	584	150	25	5	20 x 32	3 x 25
600	612	695	749.3	858	812.8	692	150	25	5	20 x 32	3 x 25

MATERIAL

Flanges : C.S.Glav.

Bellows (Moulded) : 100% PTFE - ASTM D 4895

Drilling : ASME B 16.5

Fasteners : M.S.Galv. BS 1083/ BS 916

Note : Number of convolutes depends on length of expansion bellows

HG

Honesty

Efficiency

Transparency

Ambitions



Office & Factory :
336/25/A, G.I.D.C., Makarpura, Vadodara-390010
M : 098250 76022, 099789 00795, Ph. : 0265 - 2637622
E-mail : hiren@hetaglass.com • nimesh@hetaglass.com