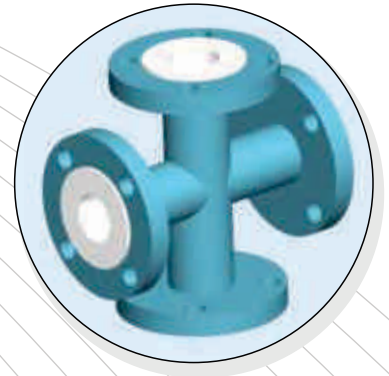
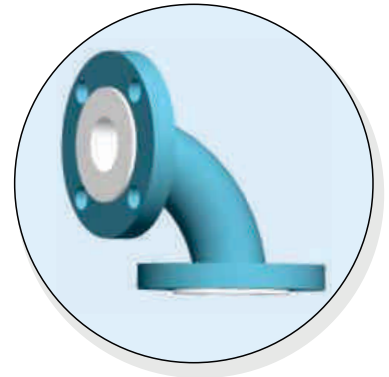
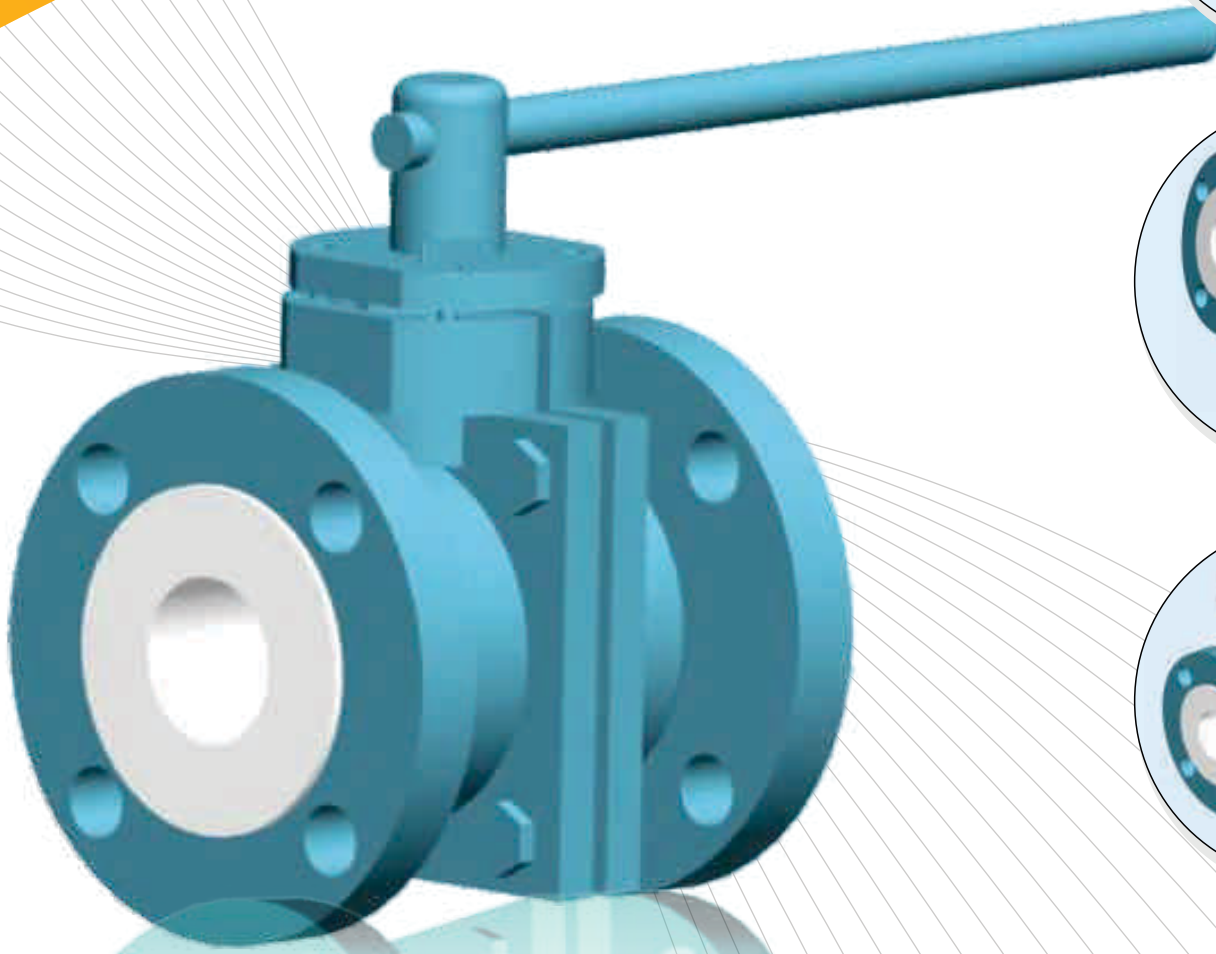
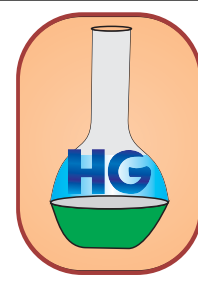


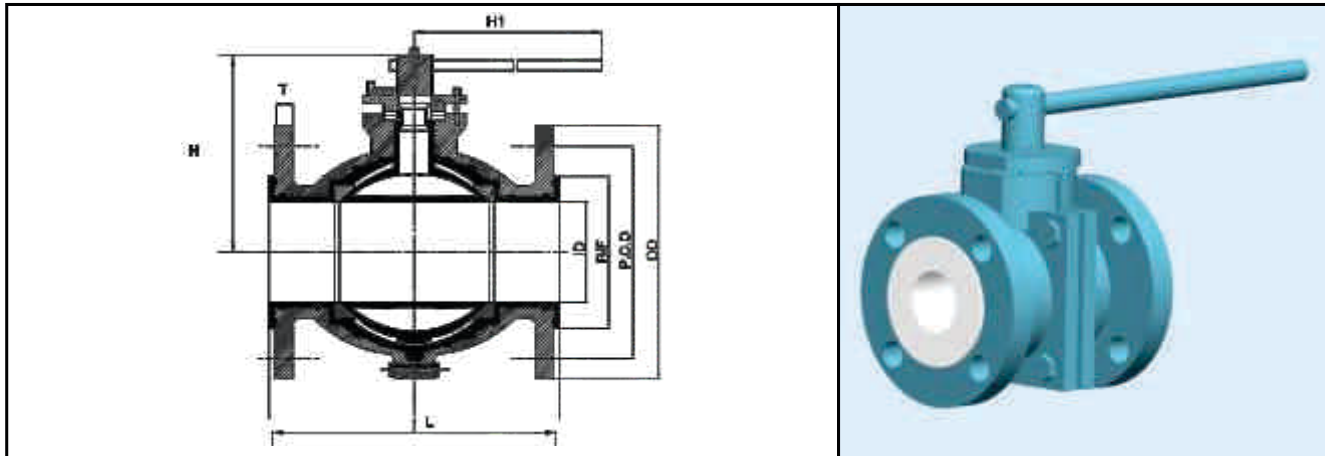
Heta Glass Industries



**ULTIMATE SOLUTION FOR
FLUID TRANSMISSION WORLD...**



PTFE (FEP/PFA) LINED BALL VALVE



Valve Size	L	H	H1	T	OD	ID	R/F	P. C. D.	Holes Dia.	No. of Hole
(mm)	(mm)	(mm)	(mm)	(mm)	(mm)	(mm)	(mm)	(mm)	(mm)	
15	108	100	175	11.5	88.9	12.5	35.0	60.3	16.0	4
25	127	100	175	12.6	108.0	25.0	51.0	79.4	16.0	4
40	165	125	205	16.0	127.0	40.5	73.0	98.4	16.0	4
50	178	130	300	17.5	152.4	50.0	92.0	120.6	19.0	4
65	190	150	300	20.7	177.8	64.0	105.0	139.7	19.0	4
80	203	170	400	22.2	190.5	77.0	127.0	152.4	19.0	4
100	229	230	480	23.2	228.6	100.0	157.0	190.5	19.0	8
150	267	300	550	24.0	279.4	148.0	215.0	241.3	22.2	8

HOUSING MATERIAL

Body : Ductile Iron GGG40.3 / ASTM A395. , Cast Steel ASTM A216 Gr. WCB, Cast Iron Is2108 FG 260

Liner : a) FEP (PTFE) – ASTM D 2116, Type IV,
b) PFA (PTFE) – ASTM D 3307, Type II,

OPTIONS

Flanges : As per ANSI B16.5 / B 16.42

Body : WCB / SS 304 / SS 306

Drilling : ASA #150 / DIN 2632/2633/ BS 10 Table D, E or F / Customer Specification

DESIGN SPECIFICATION

Face to face : ANSI B 16.10 / DIN / 3202 / BS EN 558 – 1/2

Lining Thickness 3 to 5 mm

TEST & INSPECTION DATA

Hydraulic Test : Body - 20 kg/cm², Seat - 11 kg/cm²

Pneumatic Test: 6 kg/cm²

Spark Test : 15 KV D.C.

HG

Honesty

Efficiency

Transparency

Ambitions



Office & Factory :
336/25/A, G.I.D.C., Makarpura, Vadodara-390010
M : 098250 76022, 099789 00795, Ph. : 0265 - 2637622
E-mail : hiren@hetaglass.com • nimesh@hetaglass.com