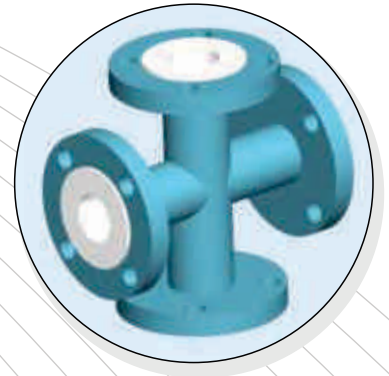
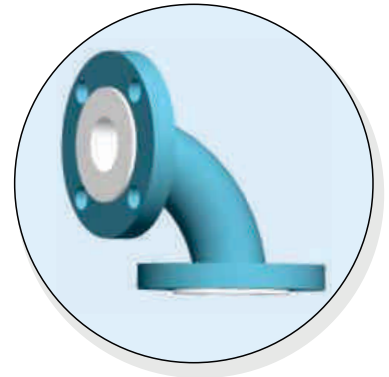
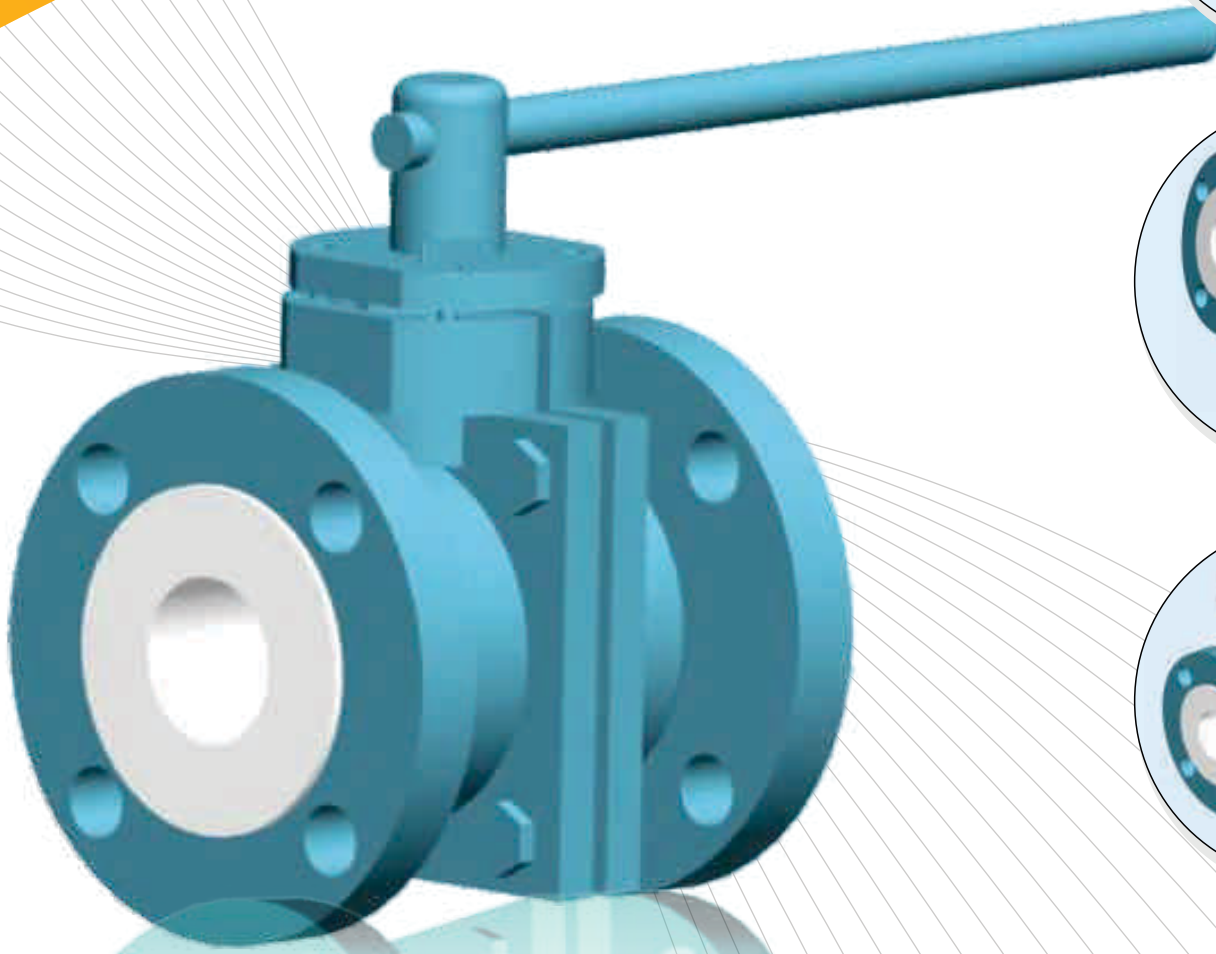
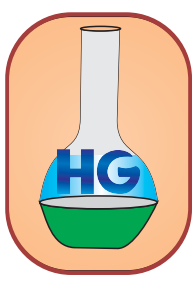


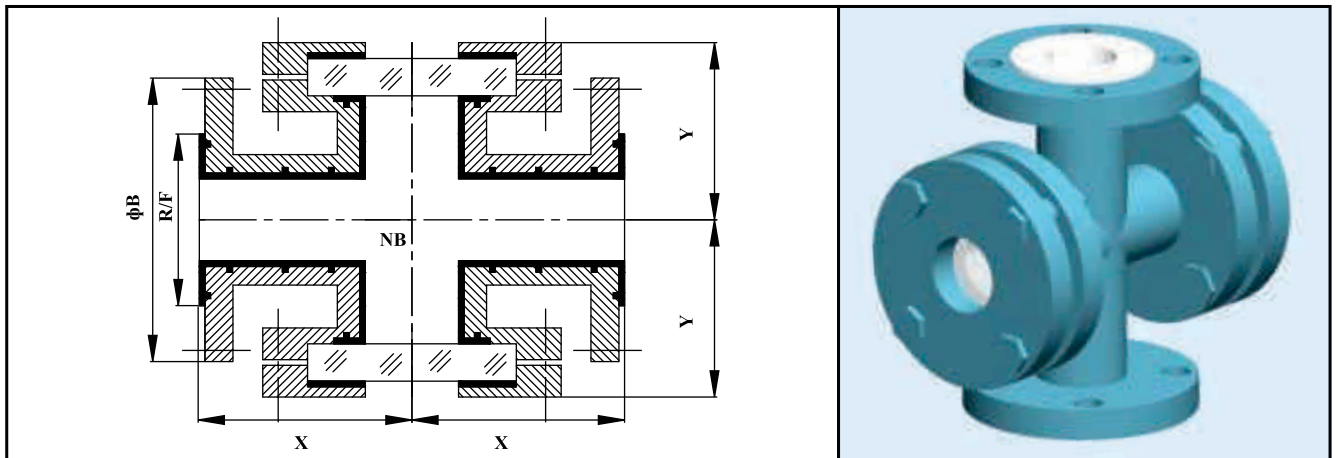
Heta Glass Industries



**ULTIMATE SOLUTION FOR
FLUID TRANSMISSION WORLD...**



LINED SIGHT FLOW INDICATOR



Nominal Bore (NB)		Center Line to face (X)	Center Line to face (Y)	Flange OD (ϕ B)	Raised Face Dia (R/F)	Liner Thickness	Steel Thickness
mm	inches	(mm)	(mm)	(mm)	(mm)	(mm)	(mm)
25	1	89	65	108.0	51	4.1	8.0
40	1.5	102	75	127.0	73	4.5	8.0
50	2	114	85	152.4	92	4.5	9.0
65	2.5	127	100	177.8	105	4.5	9.5
80	3	140	110	190.5	127	5.0	9.5
100	4	165	130	228.6	157	5.0	11.5
150	6	203	170	279.4	216	5.0	12.0

HOUSING MATERIAL

Body : SG Iron as per IS 1865-1991 Gr. 400/15
 Liner : FEP

OPTIONS

Flanges : DIN PN 10/16, BS 10, ASME 300 Mixed
 Material : Stainless Steel
 Liner : PFA
 Extras : Earthing Studs / Lugs Vent Extensions

DESIGN SPECIFICATION

Flange : As per ANSI B 16.5/B 16.42
 Face to face : DIN 3202
 Lining Thickness : 3 to 5 mm
 Other Flange Drilling like DIN 2632/2633, BS 10 Table D, E or F are also available on request

TEST & INSPECTION DATA

Hydraulic Test : 10 kg/cm² After Lining
 Spark Test : 15 KV D.C. After Lining

HG

Honesty

Efficiency

Transparency

Ambitions



Office & Factory :
336/25/A, G.I.D.C., Makarpura, Vadodara-390010
M : 098250 76022, 099789 00795, Ph. : 0265 - 2637622
E-mail : hiren@hetaglass.com • nimesh@hetaglass.com