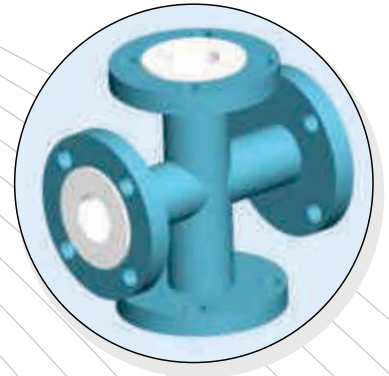
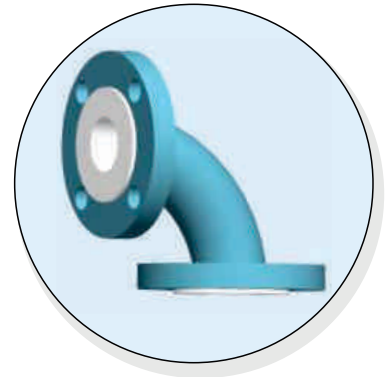
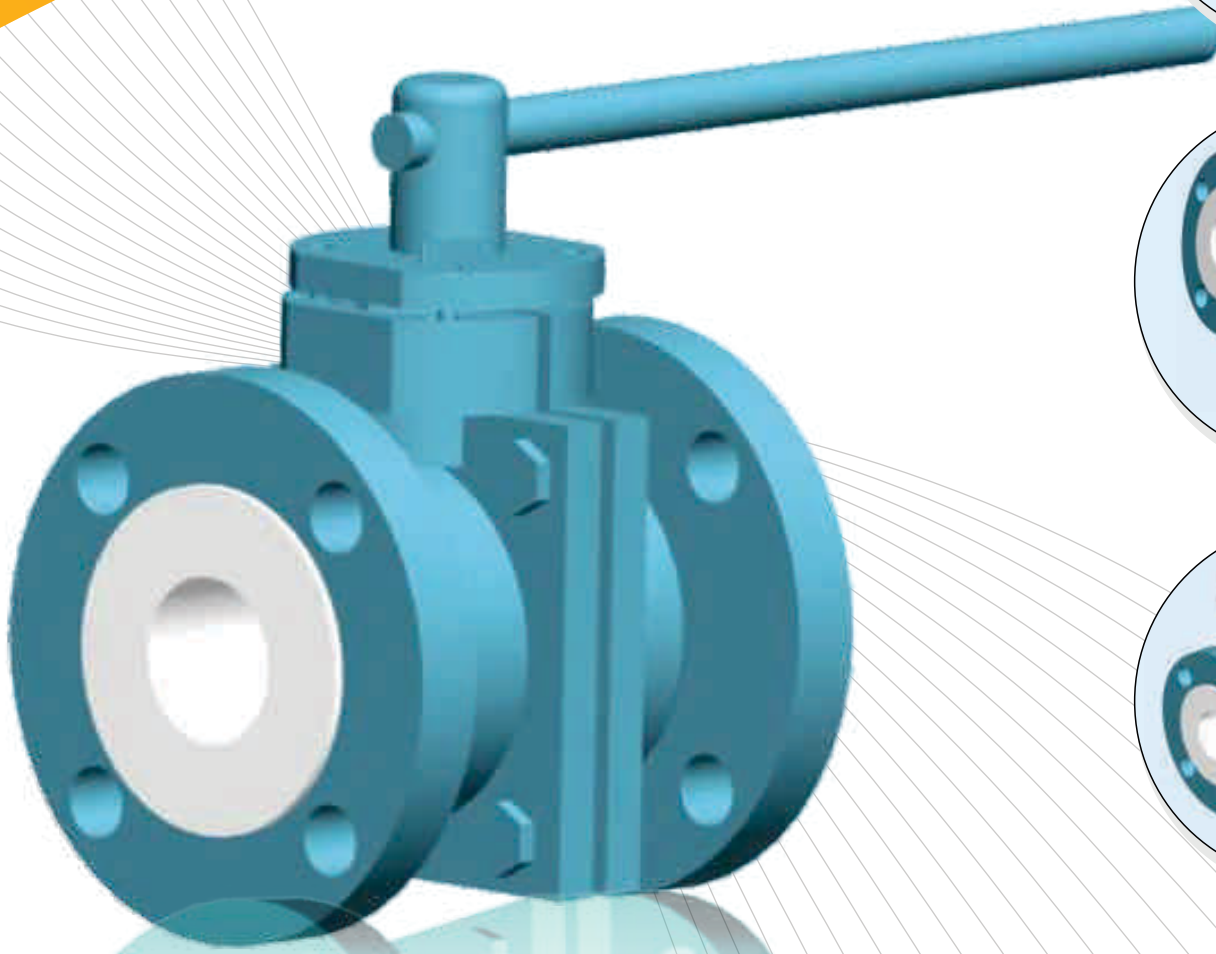
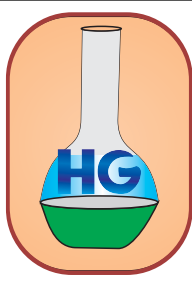


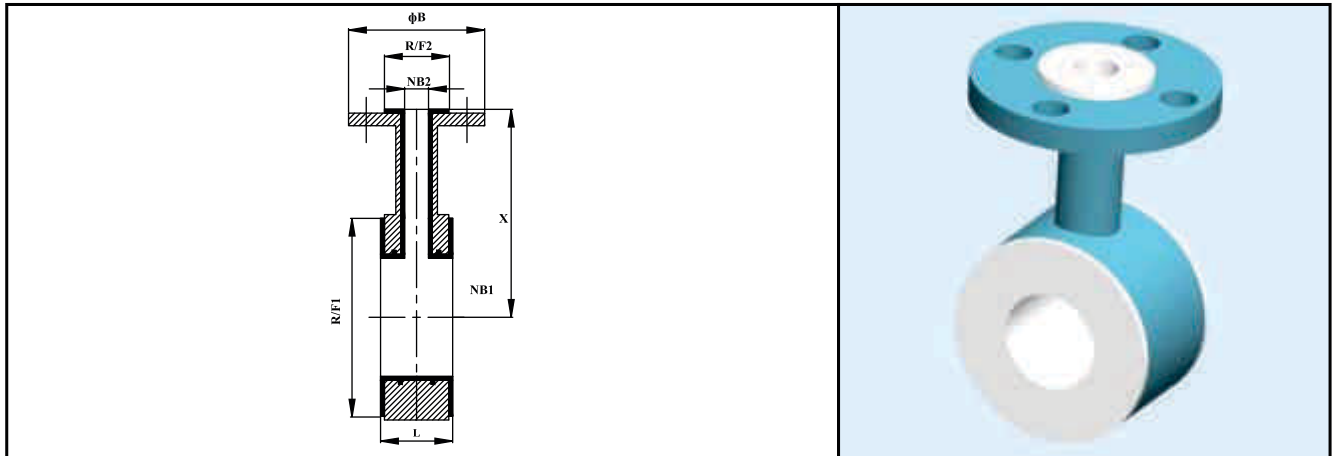
Heta Glass Industries



**ULTIMATE SOLUTION FOR
FLUID TRANSMISSION WORLD...**



LINED INSTRUMENT TEE



Nominal Bore (NB1)		Center Line to face (X)	Flange OD (ϕB)	Raised Face Dia (R/F1)	Liner Thickness
(mm)	Inches	(mm)	(mm)	(mm)	(mm)
25	1	89	108.0	51	4.0
40	1.5	102	127.0	73	4.0
50	2	114	152.4	92	4.0
80	3	140	190.5	127	4.0
100	4	165	228.6	157	4.0
150	6	203	279.4	216	4.0
200	8	229	342.9	270	4.0
250	10	279	406.4	324	4.0

Nominal Bore (NB1)		Axial Length NB 2 (L)	Flange OD (ϕB)	Raised Face Dia (R/F2)	Liner Thickness
(mm)	Inches	(mm)	(mm)	(mm)	(mm)
25	1	51	108.0	51	6.0
40	1.5	76	127.0	73	6.0

HOUSING MATERIAL

Fabricated Tee

Body : MS Round Bar
 Flanges : Made from IS 2062 Plates
 Pipe : ASTM A 106 Grade B

Cast Tee

SG Iron to IS 1865 : 1991 Grade 400 / 15
 Liner : FEP

OPTIONS

Flanges : Fixed, DIN
 PN10/16, BS 10, ASME 300 Mixed
 Material : Stainless Steel
 Liner : PFA
 Extras : Earthing Studs / Lugs Vent Extensions
 Geometry : Non Standard Dimensions

DESIGN SPECIFICATION

Flange : As per ANSI B 16.5/B 16.42
 Face to face : As per ANSI B 16.5 # 150
 Lining Thickness : 3 to 5 mm
 Other Flange Drilling like DIN PN 2632/2633, BS 10 Table D, E or F are also available on request.

TEST & INSPECTION DATA

Hydraulic Test : 20 kg/cm² After Lining
 Spark Test : 15 KV D.C. After Lining

● This information is for guidance only. No warranty is given for its accuracy

HG

Honesty

Efficiency

Transparency

Ambitions



Office & Factory :
336/25/A, G.I.D.C., Makarpura, Vadodara-390010
M : 098250 76022, 099789 00795, Ph. : 0265 - 2637622
E-mail : hiren@hetaglass.com • nimesh@hetaglass.com