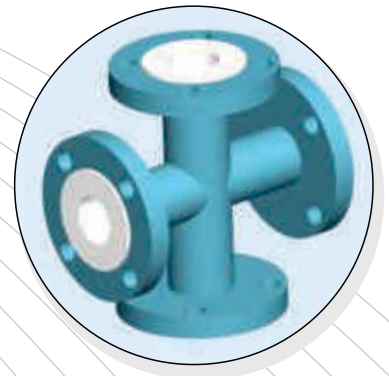
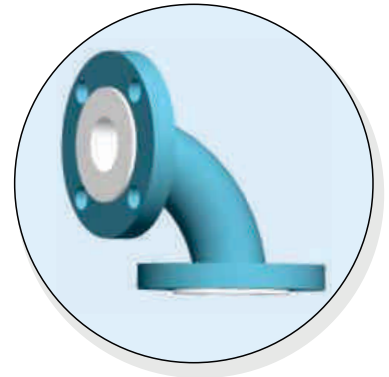
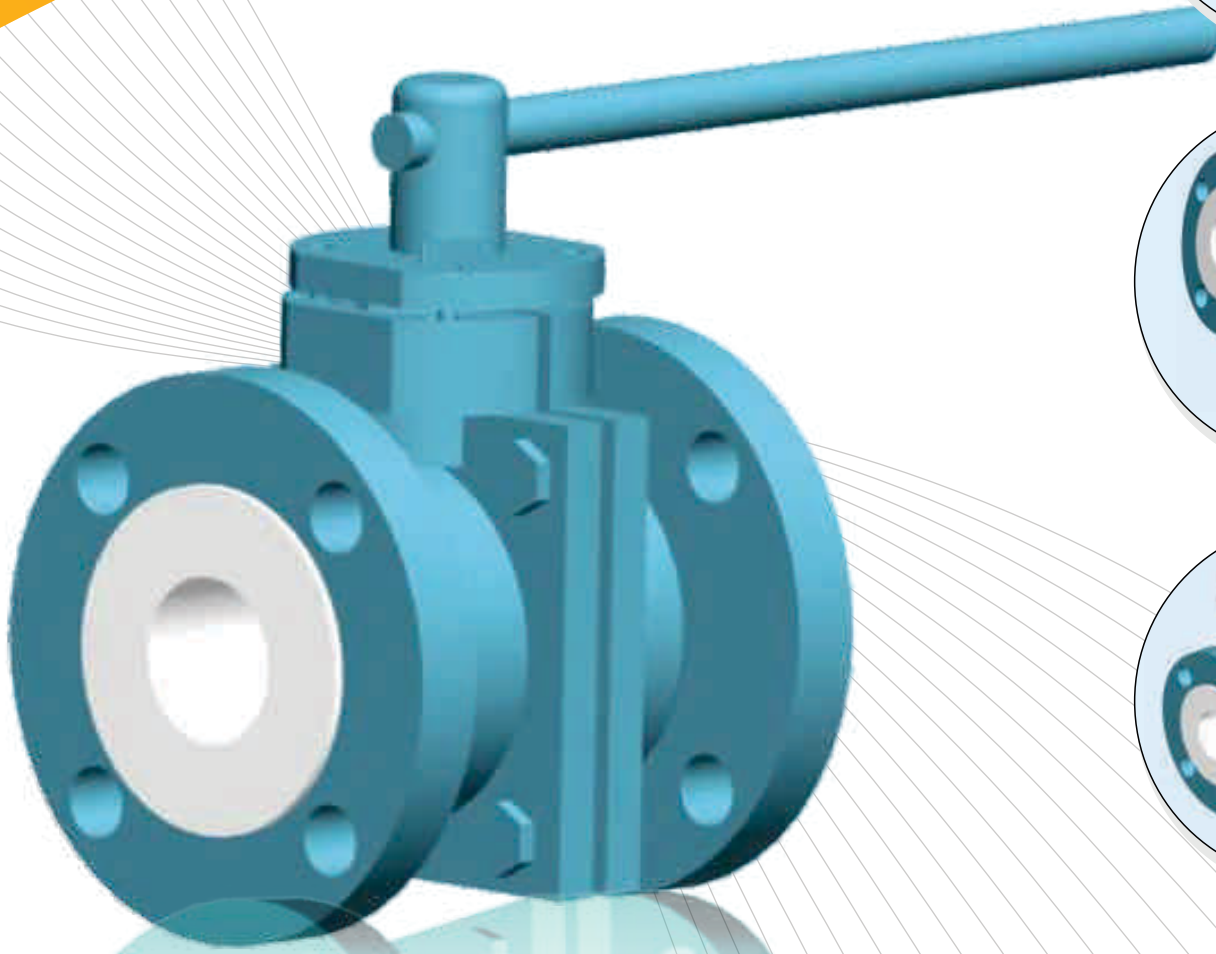
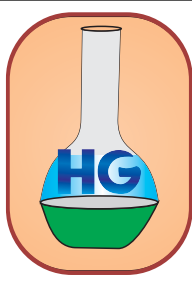


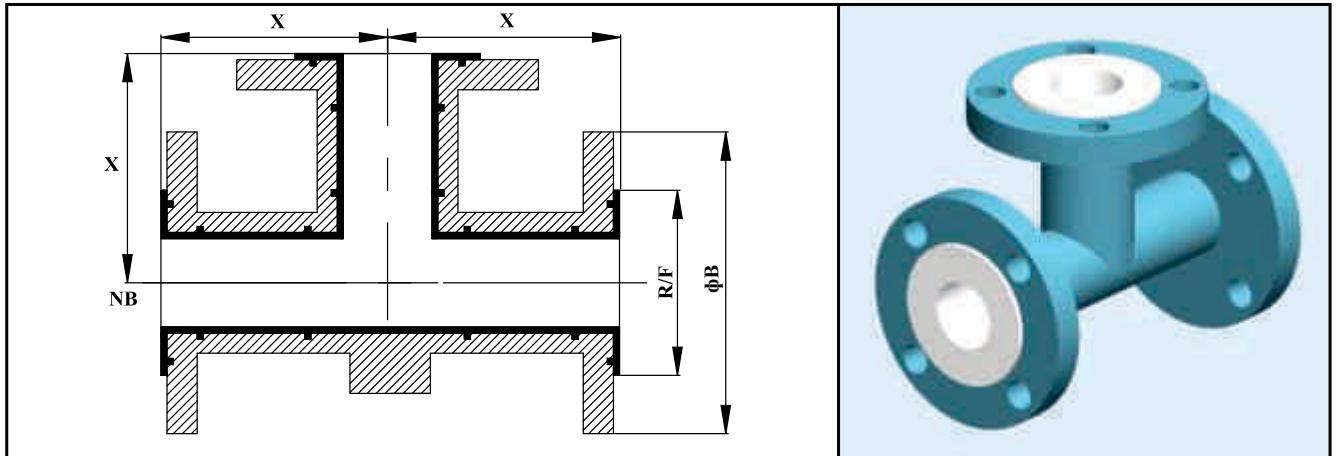
Heta Glass Industries



**ULTIMATE SOLUTION FOR
FLUID TRANSMISSION WORLD...**



LINED EQUAL TEE



Nominal Bore (NB)		Center Line to face (X)	Flange OD (φB)	Raised Face Dia (R/F)	Liner Thickness	Steel Thickness
(mm)	Inches	(mm)	(mm)	(mm)	(mm)	(mm)
25	1	89	108.0	51	4.0	8.0
40	1.5	102	127.0	73	4.0	8.0
50	2	114	152.4	92	4.0	9.0
80	3	140	190.5	127	4.0	10.0
100	4	165	228.6	157	4.0	11.5
150	6	203	279.4	216	4.0	12.0
200	8	229	342.9	270	Upon Request	
250	10	279	406.4	324		
300	12	305	482.6	381		

HOUSING MATERIAL

Flanges	: Made from Is 2062 Plates
Tee	: Pipe as per ASTM A 106 Gr.B
Cast Tee	: SG Iron as per IS 1865-1991
Liner	: FEP

OPTIONS

Flanges	: Rotating, Fixed On/Off Center Din/PN 10/16, BS 10, ASME 300 Mixed
Material	: Stainless Steel
Liner	: PFA
Extras	: Earthing Studs / Lugs Vent Extensions
Geometry	: Non Standard Dimensions

DESIGN SPECIFICATION

Flange	: As per ANSI B 16.5/B 16.42
Face to face	: As per ANSI B 16.5 # 150
Lining Thickness	: 3 to 5 mm
Other Flange Drilling like DIN 2632/2633, BS 10 Table D, E or F are also available on request	Sizes above 6" are fabricated from pipe

TEST & INSPECTION DATA

Hydraulic Test	: 20 kg/cm ² After Lining
Spark Test	: 15 KV D.C. After Lining

● This information is for guidance only No warranty is given for its accuracy

HG

Honesty

Efficiency

Transparency

Ambitions



Office & Factory :
336/25/A, G.I.D.C., Makarpura, Vadodara-390010
M : 098250 76022, 099789 00795, Ph. : 0265 - 2637622
E-mail : hiren@hetaglass.com • nimesh@hetaglass.com