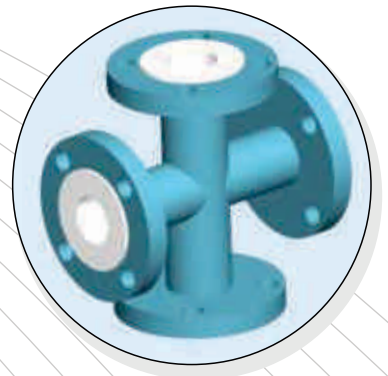
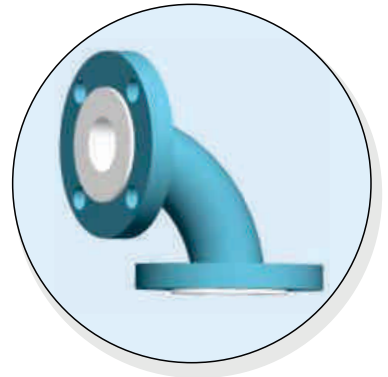
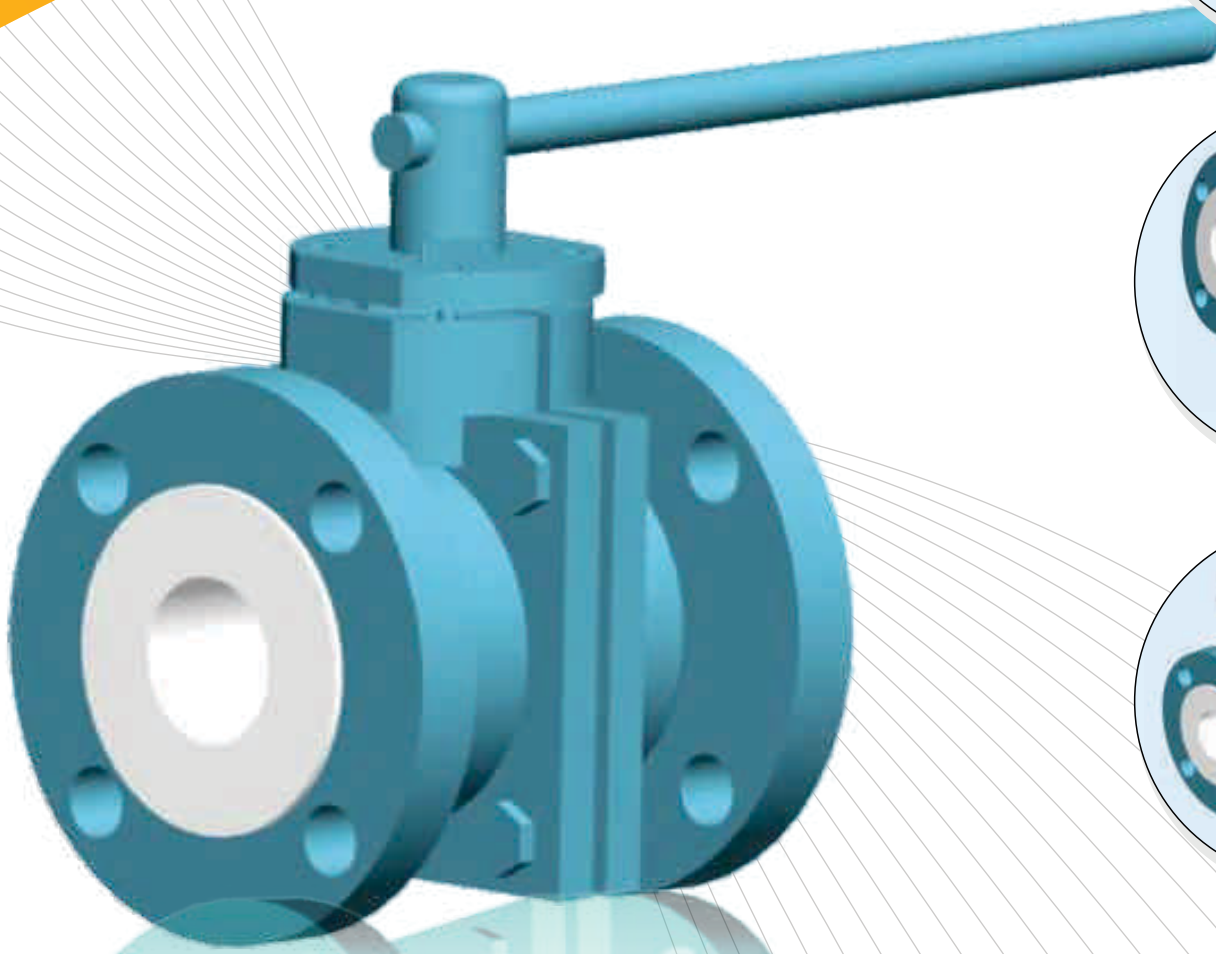
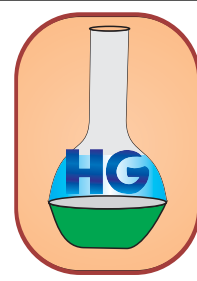


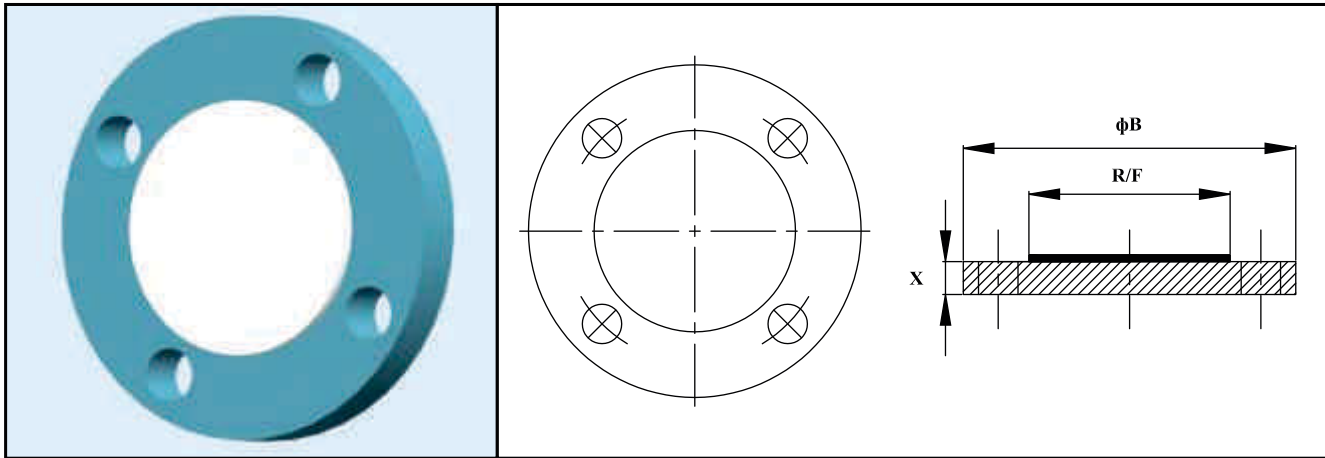
Heta Glass Industries



**ULTIMATE SOLUTION FOR
FLUID TRANSMISSION WORLD...**



LINED BLIND FLANGE



Nominal Bore (NB)		Liner Thickness	Flange OD	Raised Face Dia (R/F)	Liner Thickness (X)
(mm)	Inches	(mm)	(mm)	(mm)	(mm)
25	1	3.0	108.0	51	14.3
40	1.5	3.0	127.0	73	17.5
50	2	3.0	152.4	92	19.0
80	3	3.0	190.5	127	23.8
100	4	3.0	228.6	157	23.8
150	6	3.0	279.4	216	25.4
200	8	3.0	342.9	270	28.6
250	10	3.0	406.4	324	30.2
300	12	3.0	482.6	381	31.7

HOUSING MATERIAL

Flanges : Made from Is 2062 Plates
Liner : PTFE in accordance with ASTM D 1457

OPTIONS

Flanges : DIN PN 10/16, BS 10, ASME 300 Mixed
Material : Stainless Steel
Liner : PFA
Extras : Earthing Studs / Lugs Vent Extensions

DESIGN SPECIFICATION

Flange : As per ANSI B 16.5/B 16.42
Face to face : As per ANSI B 16.5 # 150
Lining Thickness : 3 to 5 mm
Other Flange Drilling like DIN PN 2632/2633, BS 10 Table D, E or F are also available on request. Sizes above 6" are fabricated from pipe

TEST & INSPECTION DATA

Spark Test : 15 KV D.C. After Lining

HG

Honesty

Efficiency

Transparency

Ambitions



Office & Factory :
336/25/A, G.I.D.C., Makarpura, Vadodara-390010
M : 098250 76022, 099789 00795, Ph. : 0265 - 2637622
E-mail : hiren@hetaglass.com • nimesh@hetaglass.com