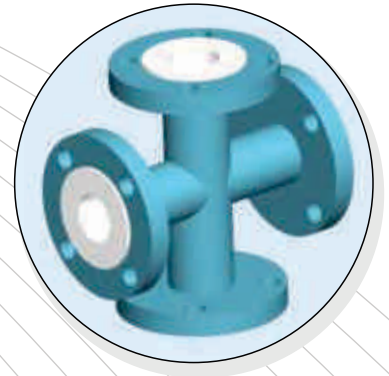
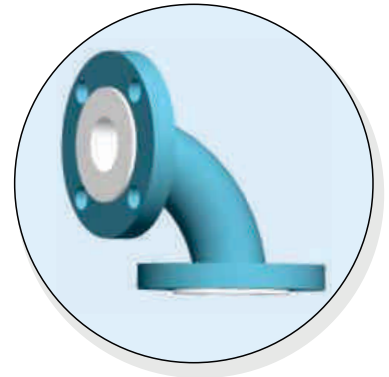
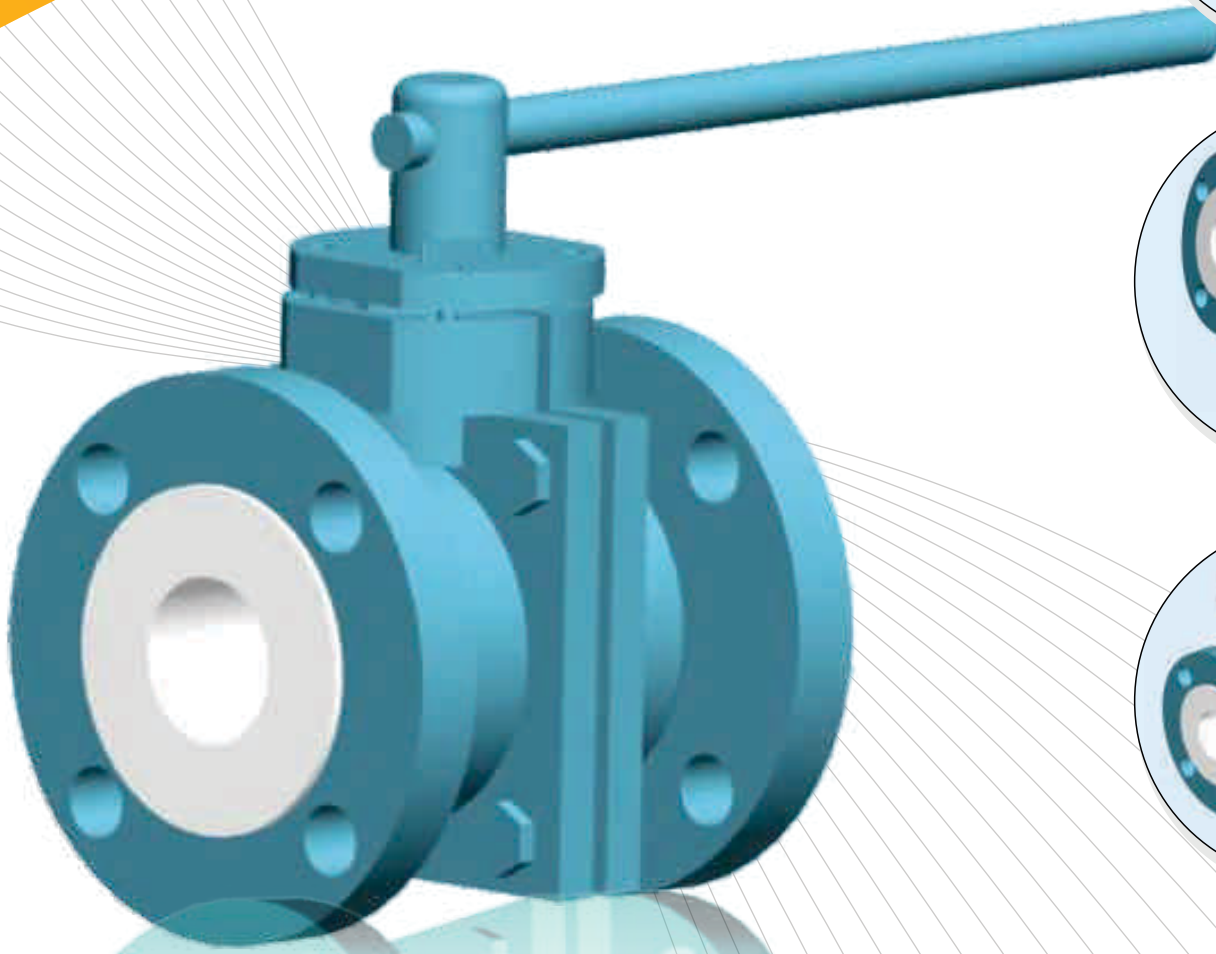
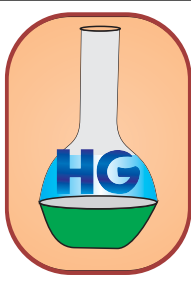


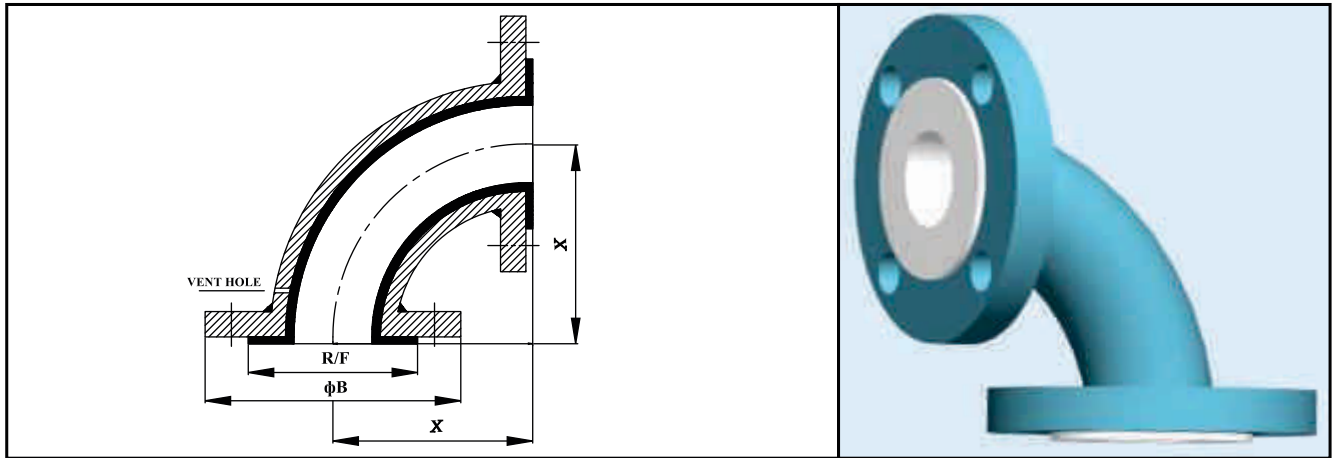
# Heta Glass Industries



**ULTIMATE SOLUTION FOR  
FLUID TRANSMISSION WORLD...**



## 90° LINED ELBOW



| Nominal Bore (NB) |        | Center Line to face (X) | Flange OD (ЦБ) | Raised Face Dia (R/F) | Liner Thickness     | Steel Thickness |
|-------------------|--------|-------------------------|----------------|-----------------------|---------------------|-----------------|
| (mm)              | Inches | (mm)                    | (mm)           | (mm)                  | (mm)                | (mm)            |
| 25                | 1      | 89                      | 108.0          | 51                    | 3.3                 | 3.3             |
| 40                | 1.5    | 102                     | 127.0          | 73                    | 3.3                 | 3.6             |
| 50                | 2      | 114                     | 152.4          | 92                    | 3.3                 | 3.9             |
| 80                | 3      | 140                     | 190.5          | 127                   | 4.5                 | 5.4             |
| 100               | 4      | 165                     | 228.6          | 157                   | 4.5                 | 6.0             |
| 150               | 6      | 203                     | 279.4          | 216                   | 5.0                 | 7.1             |
| 200               | 8      | 229                     | 342.9          | 270                   | <b>Upon Request</b> |                 |
| 250               | 10     | 279                     | 406.4          | 324                   |                     |                 |
| 300               | 12     | 305                     | 482.6          | 381                   |                     |                 |

### HOUSING MATERIAL

Body : Formed from ASTM A 106 Gr.B Pipes  
 Flanges : Made from IS 2062 Plates  
 Liner : PTFE In accordance with ASTM D 1457

### OPTIONS

Bend : Jacketed 90° elbow can be supplied on request  
 Flanges : 1. Rotating Flange is also available on request  
           2. Fixed On/Off Center Din/PN 10/16, BS 10, ASME 300 Mixed  
 Material : Stainless Steel  
 Extras : Earthing Studs / Lugs Vent Extensions  
 Geometry : Long Radius, Other Angles

### DESIGN SPECIFICATION

Flange : As per ANSI B 16.5/B 16.42  
 Face to face : As per ANSI B 16.5 # 150  
 Lining Thickness : 3 to 5 mm  
 Other Flange Drilling like DIN 2632/2633, BS 10 Table D, E or F are also available on request

### TEST & INSPECTION DATA

Hydraulic Test : 20kg/cm<sup>2</sup> After Lining  
 Spark Test : 15 KV D.C. After Lining

# HG

**H**onesty

**E**fficiency

**T**ransparency

**A**mbitions



**Office & Factory :**  
336/25/A, G.I.D.C., Makarpura, Vadodara-390010  
M : 098250 76022, 099789 00795, Ph. : 0265 - 2637622  
E-mail : [hiren@hetaglass.com](mailto:hiren@hetaglass.com) • [nimesh@hetaglass.com](mailto:nimesh@hetaglass.com)