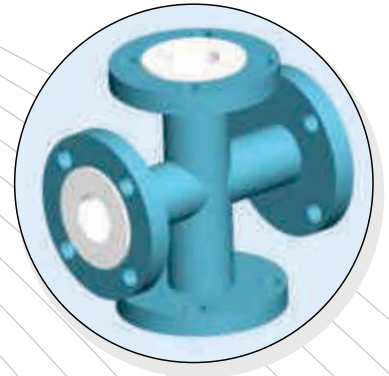
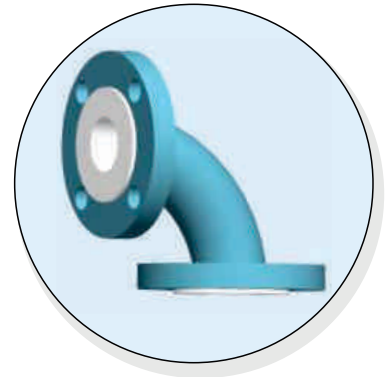
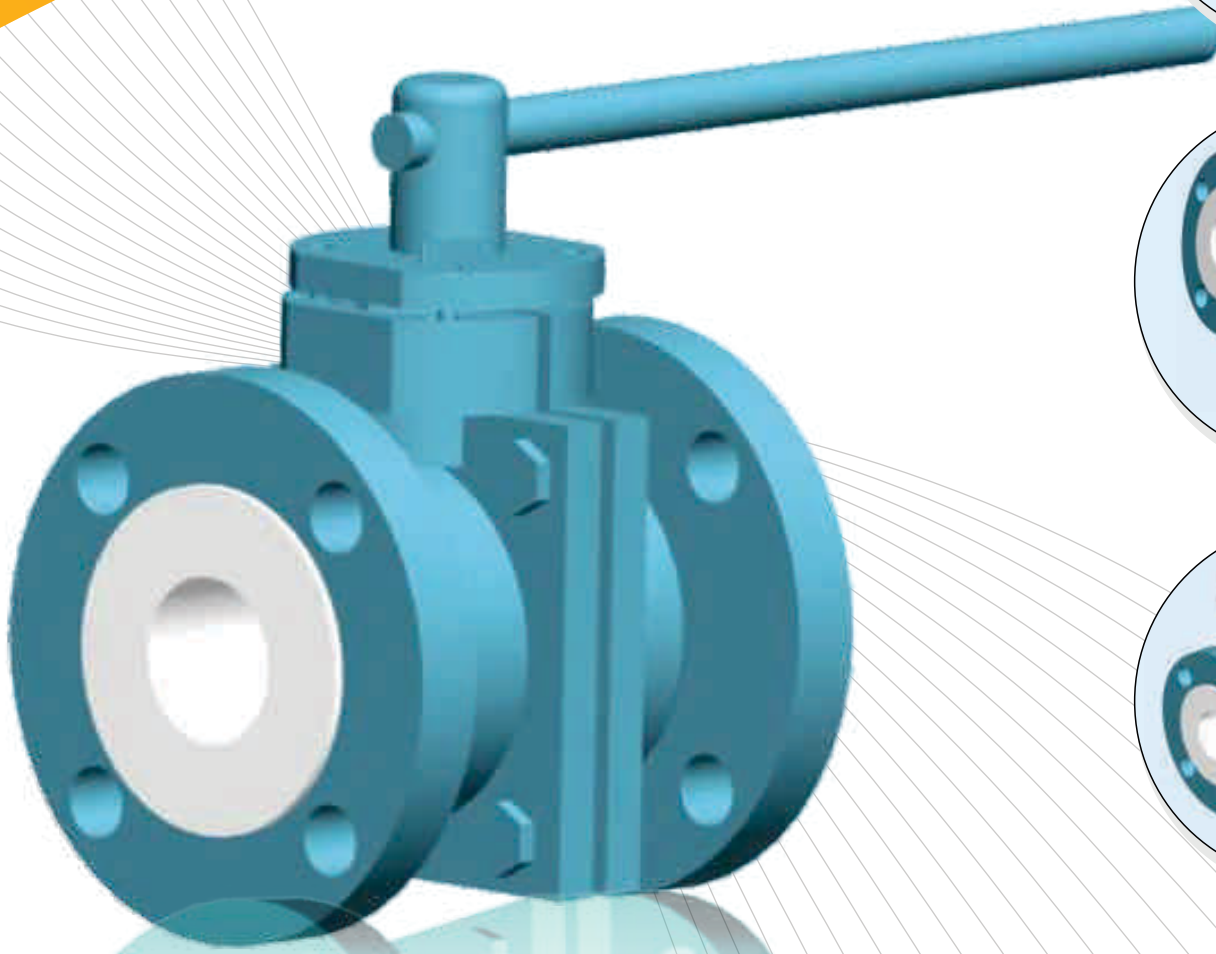
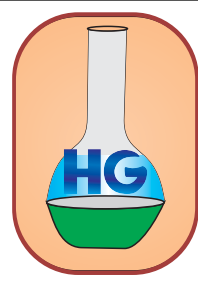


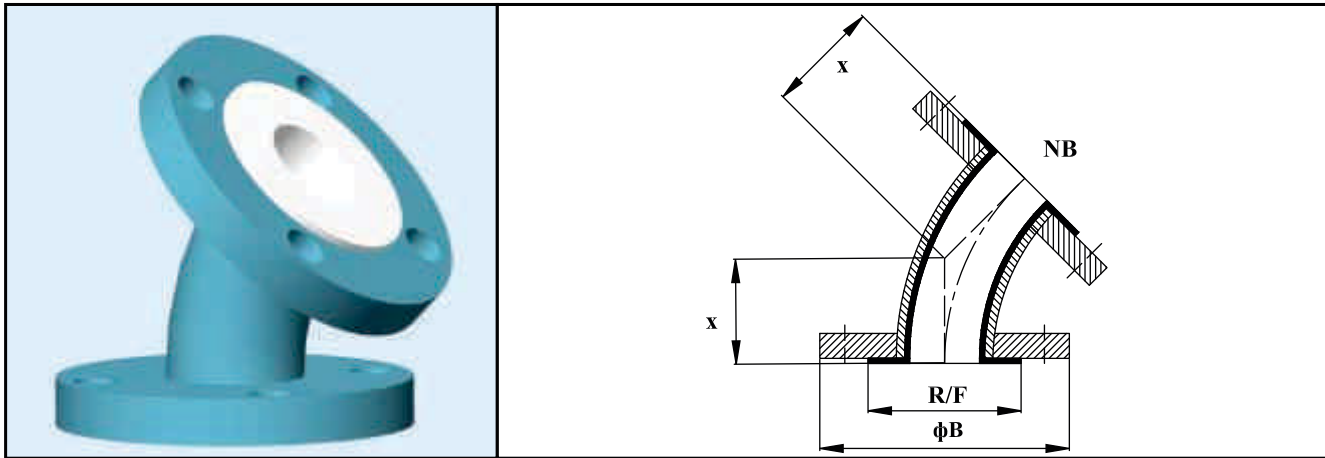
Heta Glass Industries



**ULTIMATE SOLUTION FOR
FLUID TRANSMISSION WORLD...**



45° LINED ELBOW



Nominal Bore (NB)		Center Line to face (X)	Flange OD (φB)	Raised Face Dia (R/F)	Liner Thickness	Steel Thickness
(mm)	Inches	(mm)	(mm)	(mm)	(mm)	(mm)
25	1	44	108.0	51	3.3	3.3
40	1.5	57	127.0	73	3.3	3.6
50	2	63	152.4	92	3.3	3.9
80	3	76	190.5	127	4.5	5.4
100	4	102	228.6	157	4.5	6.0
150	6	127	279.4	216	5.0	7.1

HOUSING MATERIAL

Bend : Formed from ASTM A 106 Gr.B Pipes
 Flanges : Made from Is 2062 Plates
 Liner : PTFE In accordance with ASTM D 1457

OPTIONS

Flanges : 1. Rotating Flange is also available on request
 2. Fixed On/Off Center Din/PN 10/16, BS 10, ASME 300 Mixed
 Material : Stainless Steel
 Extras : Earthing Studs / Lugs Vent Extensions
 Geometry : Long Radius, Other Angles

DESIGN SPECIFICATION

Flange : As per ANSI B 16.5/B 16.42
 Face to face: As per ANSI B 16.5 # 150
 Lining Thickness: 3 to 5 mm
 Other Flange Drilling like DIN 2632/2633, BS 10
 Table D, E or F are also available on request

TEST & INSPECTION DATA

Hydraulic Test : 20kg/cm² After Lining
 Spark Test : 15 KV D.C. After Lining

HG

Honesty

Efficiency

Transparency

Ambitions



Office & Factory :
336/25/A, G.I.D.C., Makarpura, Vadodara-390010
M : 098250 76022, 099789 00795, Ph. : 0265 - 2637622
E-mail : hiren@hetaglass.com • nimesh@hetaglass.com